

COMPARISON OF AVIRIS AND EO-1 HYPERION FOR CLASSIFICATION AND MAPPING OF INVASIVE LEAFY SPURGE IN THEODORE ROOSEVELT NATIONAL PARK

Ralph Root,¹ Susan Ustin,² Pablo Zarco-Tejada,² Carlos Pinilla,² Raymond Kokaly,³ Gerry Anderson,⁴ Karl Brown,⁵ Kay Dudek,⁶ Steve Hager,⁷ and Edmond Holroyd⁸

1. Introduction

Invasive species are rapidly becoming a threat to the world's biodiversity. In the United States alone, non-native species are causing environmental damage and economic losses estimated to exceed \$100 billion per year (Pimentel *et al.*, 2000). Morse *et al.* (1995) estimate that approximately 5,000 plant species that have escaped from cultivation have subsequently invaded natural ecosystems in the United States. One of these species, leafy spurge (*Euphorbia esula* L.), entered North America from Eurasia in 1829 (Council for Agricultural Science and Technology (CAST), 2000). Some years later, during the Homestead Period, it found its way into North Dakota and subsequently has spread throughout the upper Midwest and northern Rocky Mountain States, causing estimated annual losses of revenue in excess of \$200 million. Leafy spurge causes severe ecosystem alteration due to its aggressive growth relative to that of native flora, its ability to invade unaltered habitats, and its persistence once established. It forms nearly monotypic stands and has the capacity to alter ecological processes and visitor perceptions of Theodore Roosevelt National Park and the surrounding region (Trammell, 1994).

Control of leafy spurge infestations has become a primary resources management issue at Theodore Roosevelt National Park, resulting in years of research to develop efficient and cost effective methods for detection, mapping, and monitoring of this plant (Anderson, *et al.*, 1997; O'Neill *et al.*, 2000; Root and Wickland, 2001).

2. Study area description

Theodore Roosevelt National Park (Fig. 1) was established April 25, 1947. The park consists of three separate units totaling 70,416.39 acres of which 245 acres are directly linked in historical significance to the life of Theodore Roosevelt. Management is directed toward protection and interpretation of the badlands ecosystems surrounding the Little Missouri River and the cultural resources resulting from human habitation of the area. Approximately 42 percent of the park has been designated as a wilderness. Local variations in geology, soil, and topography along the Little Missouri River have created an abrupt scenic contrast to the gently rolling panorama of the northern Great Plains. Sandstones, siltstones, and clays interspersed with beds of coal -- some of which have burned, baking the overlying clays into bright pink to deep purple "scoria" -- have been sculptured into a landscape of seemingly infinite variety. The badlands formations are rich in fossils of Paleocene forests and swamp life including petrified trunks of giant Metasequoia and remains of ancient alligators. Under the influence of today's climate, the park is mantled by a rich and diverse mosaic of plant communities that provide habitats for an equally diverse variety of animal life.

Approximately 500 species of vascular plants are found in the park. While the majority of plants are typical of those found in the rolling plains of the Missouri Plateau, species of the southwestern desert and Great Basin regions, as well as from the boreal forests are represented here. Of these, 59 species are not native to the park's total flora. The most invasive exotic with the greatest potential for damage to native plant communities is leafy spurge.

Leafy spurge is found throughout the park in all habitat types, although it prefers streambeds, drainages, and wooded draws. The plant was first discovered at the western boundary of the park on Knutson Creek, and spread east along the drainage from an established National Grasslands infestation. From just a few plants in the late-

¹ U.S. Geological Survey, Rocky Mountain Mapping Center, Denver, Colorado (Ralph_root@usgs.gov)

² Center for Spatial Technologies and Remote Sensing (CSTARS), Department of Land, Air and Water Resources (LAWR), University of California, Davis

³ U.S. Geological Survey, Spectroscopy Laboratory, Denver, Colorado

⁴ U.S. Department of Agriculture, Agricultural Research Service, Northern Plains Agricultural Research Laboratory, Sidney, Montana

⁵ U.S. Geological Survey, Center for Biological Informatics, Denver, Colorado

⁶ Colorado State University, College of Forest Sciences, Fort Collins, Colorado

⁷ National Park Service, Theodore Roosevelt National Park, Medora, North Dakota

⁸ U.S. Bureau of Reclamation, Remote Sensing and Geographic Information Group, Denver, Colorado

1960s, the infestation grew to an estimated 10 ha by 1970. During the next twenty years, sporadic attempts at containment and eradication with herbicides were limited to manual ground spraying in rugged terrain while the infestation increased dramatically. In the late 1980s, the park embarked on an aggressive eradication campaign in cooperation with the United States Department of Agriculture (USDA) Agricultural Research Service (ARS), Animal and Plant Health Inspection Service (APHIS), and North Dakota State University. An integrated approach utilizing helicopter-based herbicide application, ground spraying, and release of host-specific insect species (biological control) was adopted and remains in use to date.

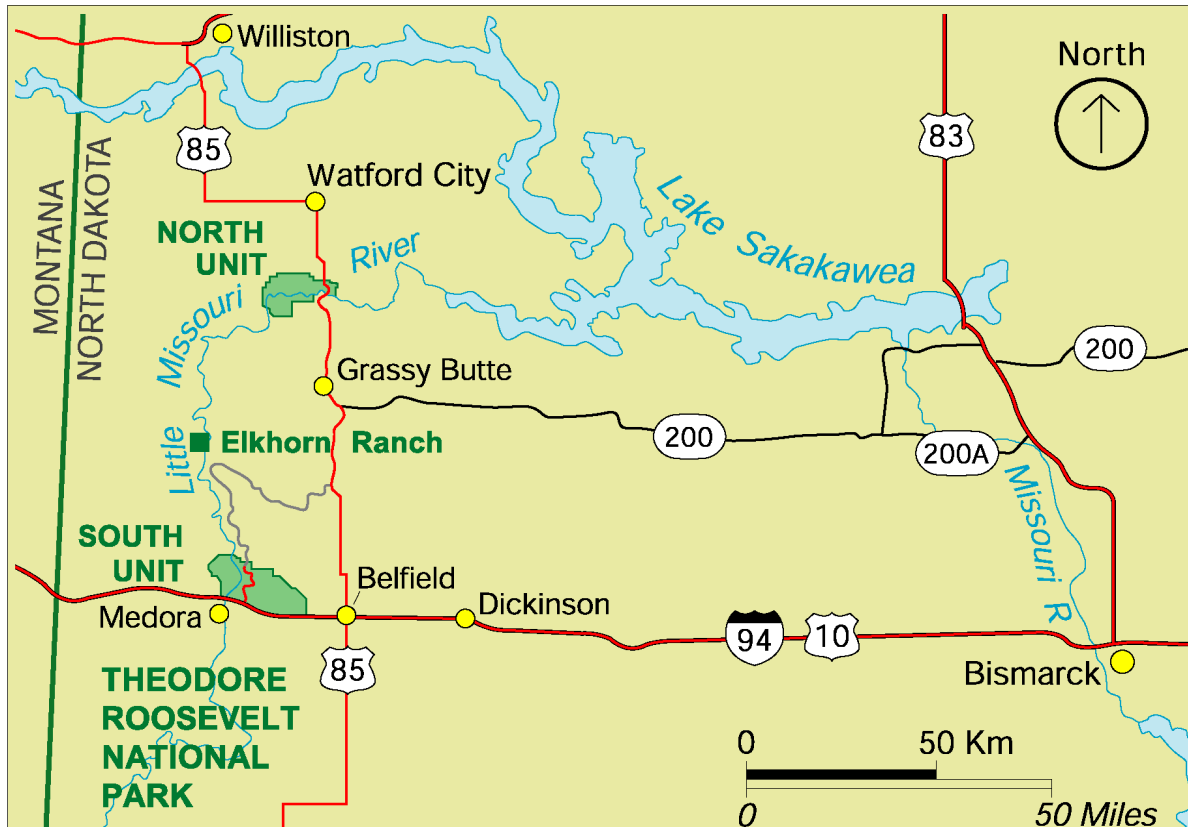


Figure 1. Location of study area. The South Unit of Theodore Roosevelt National Park is situated immediately north of Medora, ND, bordering Interstate Highway 94.

Biological control insectories located in North Dakota and Montana provided increasing numbers of insects for release in the park beginning in 1994. By the late 1990s, more than 2000 insect release sites had been established, forming a dense network of insectories throughout the infestation. Recently, the park has seen landscape-scale reduction in leafy spurge infestation as the insect network coalesces; however, leafy spurge still infests an estimated 10 percent of the land base. To effectively monitor the infestation and improve the application of controls, state-of-the-art remotely sensed data are being used at frequent intervals to quantify areas of reduction/eradication and identify remaining infestations.

3. Previous leafy spurge mapping efforts

In 1993, the USDA ARS flew low-altitude aerial photography at a scale of 1:10,000 over the South Unit of Theodore Roosevelt National Park, and mapped the leafy spurge infestation with visual photointerpretation (Anderson *et al.*, 1997). Maps depicting 750 ha of leafy spurge were digitized, georeferenced, and imported into a geographic information system (GIS). Using this base of spatial information, map products were generated that allowed park managers to more efficiently gather and direct resources toward infestation control (National Park Service, 1992; Redente, 1993). In 1998 the South Unit of the park was reflown, and an updated leafy spurge map

was created, again by manual photointerpretation. In Figure 2 the level of infestation by 1993 is illustrated in yellow, with additional infestations from 1993 to 1998 mapped in red. Because different photointerpreters were used in 1998, the areas of infestation are more generalized, giving the impression of greater spread than may have actually occurred.

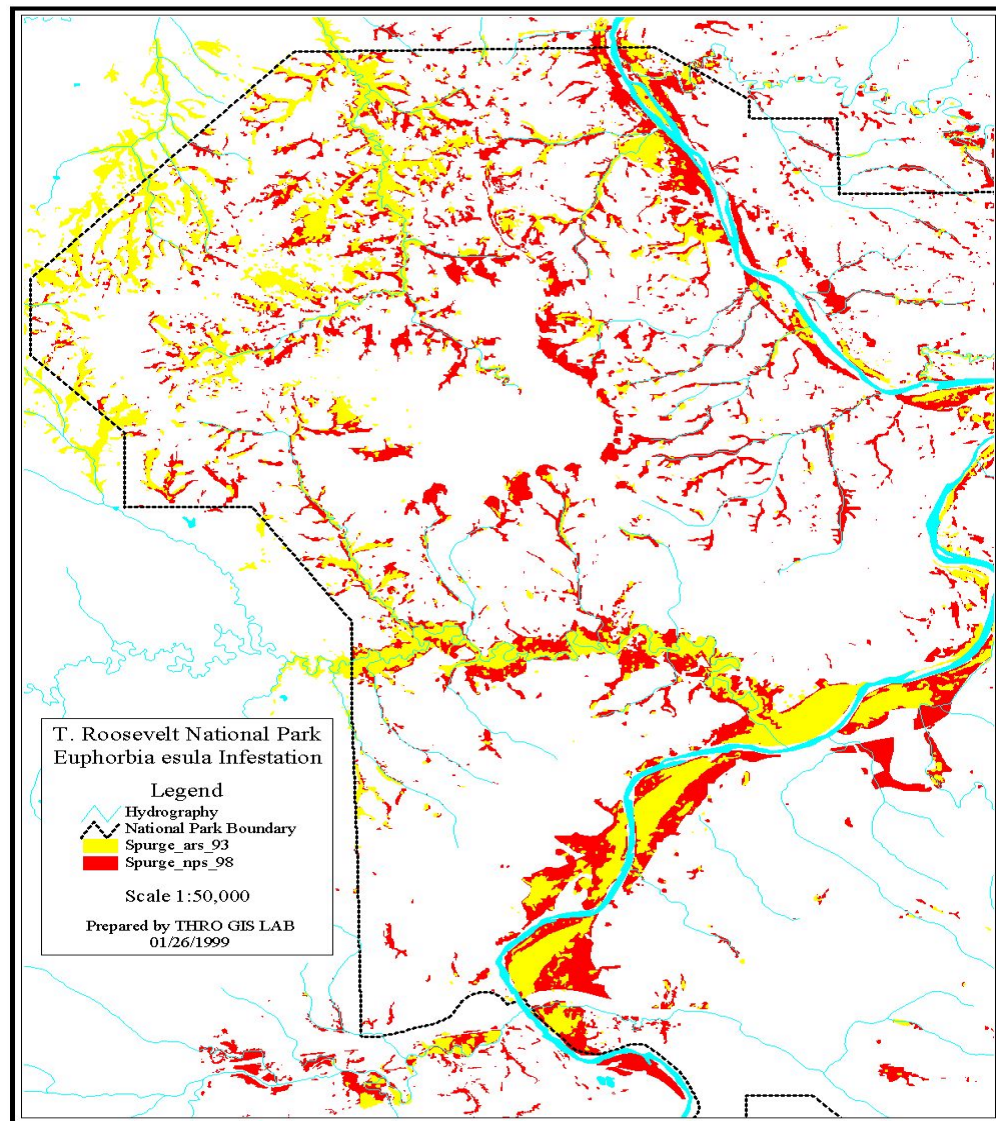


Figure 2. Manually interpreted aerial photo maps of leafy spurge illustrating infestation levels in 1993 (yellow), and 1998 (red).

For this reason, a variety of digital remote sensing techniques have been examined since 1998 with the aim of achieving more quantitative and consistent analysis of leafy spurge spread over time.

4. Data acquisition

Testing of state-of-the art remote sensing technology for detection and mapping of leafy spurge at Theodore Roosevelt National Park began in 1998 as part of a cooperative demonstration project between the National Aeronautics and Space Administration (NASA) and the United States Department of Interior. (DOI). Within the NASA/DOI Hyperspectral Technical Transfer Project (Root and Wickland, 2001), high altitude Airborne Visible and Infrared Imaging Spectrometer (AVIRIS) data were collected over the South Unit of the park in July, 1999.

Preliminary analysis of these data demonstrated that leafy spurge could be identified and mapped (O'Neill *et al.*, 2000).

Examination of the potential for mapping leafy spurge from a space-based platform was supported by NASA in 1999 with the incorporation of leafy spurge mapping research into the Earth Observing-1 (EO-1) science validation program. EO-1 Hyperion data were obtained over the extreme western part of the South Unit of Theodore Roosevelt National Park on May 21, July 6, and September 24 of 2001, along with a second high altitude AVIRIS mission on 21 June 2001 for comparison purposes. Because leafy spurge was close to full bract development in early July, the 6 July 2001 Hyperion data set was selected for in-depth analysis. Fully developed bracts produce a uniform greenish-yellow canopy, making infestations visibly stand out from surrounding native vegetation.

5. Data pre-processing and calibration to surface reflectance

The EO-1 Hyperion data, collected on 6 July 2001, were corrected to radiance (Level 1) at NASA Goddard Space Flight Center. The radiance corrected data, initially in hierarchical data format (HDF), were then sent to the USGS Rocky Mountain Mapping Center and previewed for spatial and spectral data integrity.

At the time of EO-1 data collection on 6 July 2001, field crews used two ASD-FR spectrometers to gather several hundred ground spectra over a pre-selected calibration site at the estimated time of satellite overpass. The site was a 1 ha. level asphalt parking surface with uniform medium reflectance. Consistency of spectral responses between the two spectrometers was verified by single path measurements through a calibrated mylar sheet. Close agreement of sharp absorption feature responses from both instruments justified merging the spectra.

The mean calibration reflectance spectrum collected from the ground was then corrected for Spectralon panel absorption features, to achieve the best possible approximation of true reflectance. Noise associated with the 1,370 and 1,870 nm water vapor regions was eliminated using lab-measured spectra from asphalt samples obtained from the parking area. Minor smoothing was also done in the 2,200 to 2,500 nm region where field instrument signal-to-noise was at a minimum. The spectrum was then convolved to Hyperion and AVIRIS wavelength and bandpass, and processed in ACORN (Atmospheric CORrection Now) (Analytical Imaging and Geophysics, 2001), to ratio the data to surface reflectance. The final edited and smoothed ground spectrum was input into ACORN for Single Spectrum Enhancement (SSE) along with the arithmetic mean of corresponding AVIRIS and Hyperion pixels. These were selected after examination of their spectra to assure that they were consistent and positioned fully within the boundaries of the asphalt calibration surface. Because calibration site ground spectra collected at the time of the AVIRIS overflight on 21 June 2001 were virtually the same as those collected on 6 July 2001, only the 6 July 2001 ground spectra were used for calibration of both sensors. Close agreement (± 1 percent) between the EO-1 and AVIRIS calibration spectra indicated consistent calibration to surface reflectance enabling direct comparisons between the two sensors.

6. Comparison of AVIRIS and EO-1 spectra

Figure 3 shows comparisons of 21 June 2001 and 6 July 1999 AVIRIS and 6 July 2001 EO-1 Hyperion spectra over identical ground locations at: the calibration site, the Medora sewage lagoon (low reflectance water), Little Missouri River (turbid water), non-vegetated road fill, a 0.5 ha patch of leafy spurge, and a 4 ha grassland area. All areas clearly show the difference in noise levels of the two instruments, but they also show the consistency of Hyperion in approximating the spectra obtained by AVIRIS. Over highly reflective surfaces there are consistently lower reflectance levels in the 950-1,900 nm range for Hyperion. Although the reasons for this difference are unclear, it may be a result of a small scaling error in the Hyperion calibration or it might indicate variations in Hyperion detector response in this portion of the spectrum.

7. Collection of vegetation spectra and verification data from the ground

Throughout the course of this study ground spectra were collected at multiple sites representing varying densities of leafy spurge ranging from 25 to 100 percent canopy cover, and at other locations representing native grasses and shrubs. Each measured site was delineated by global positioning system (GPS) measurements and entered into the park's GIS database. Spectrometer measurements were collected by walking over the entire site with the collection probe to obtain a mean spectrum with both a strong signal and good spatial variation within the site. Numbers of individual spectra collected at each site were usually in excess of 200, with a minimum of 50. Mylar panels were used to document the spectral calibration of each spectrometer used in the study to assure uniformity of spectra.

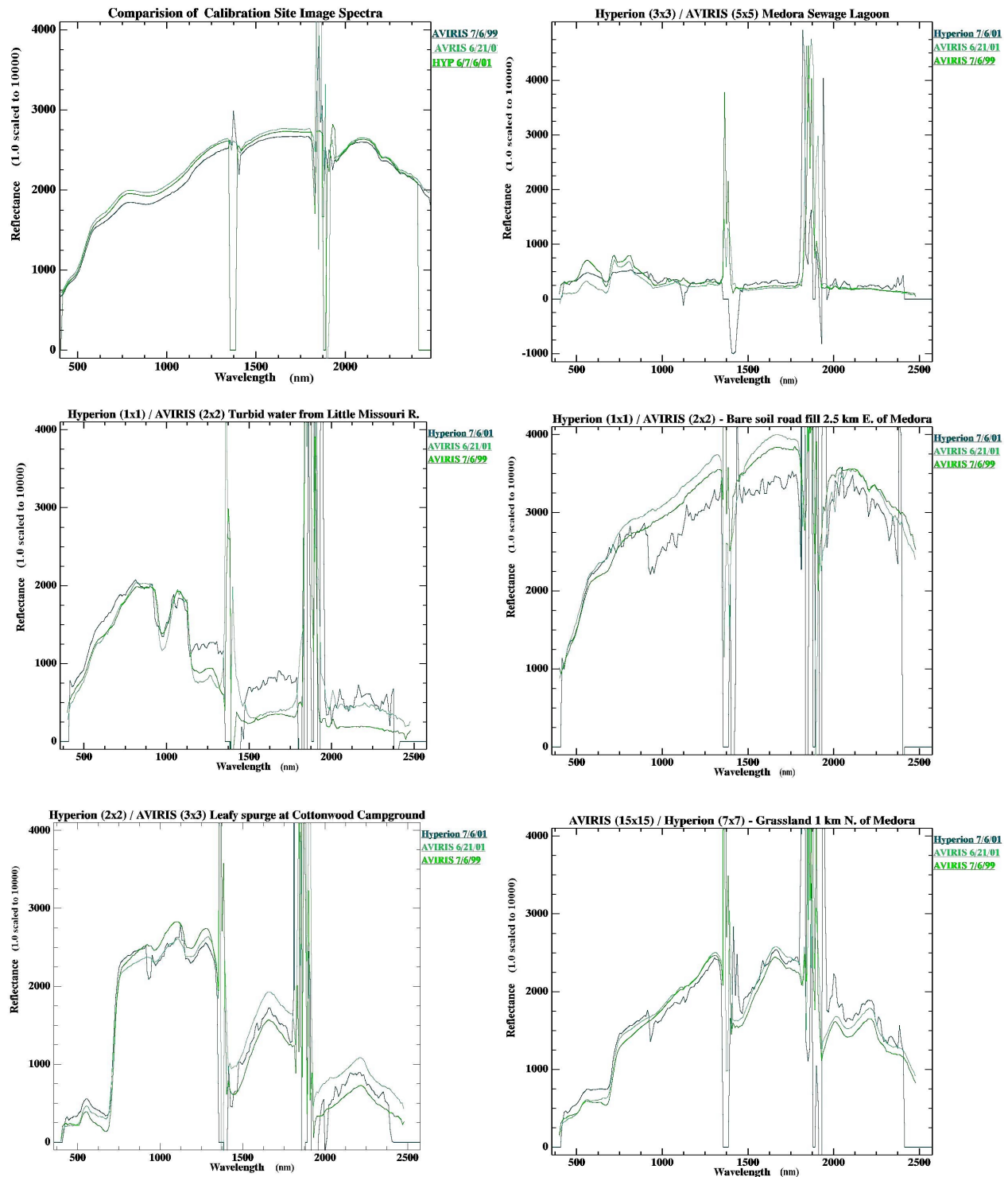


Figure 3. Comparisons of Hyperion (2001) and AVIRIS (1999 and 2001) spectra at selected locations.

During the summer of 2001, field crews at Theodore Roosevelt National Park trained in vegetation identification and GPS field procedures conducted detailed ground surveys of major leafy spurge infestation areas. Using a sampling scheme of 32 by 32 m grid cells, percent cover of leafy spurge and up to 28 other vegetation types was recorded in several areas containing extensive leafy spurge infestations (National Park Service, 2001). These data were gathered to characterize both presence and density of leafy spurge in spatial context with associated native vegetation. A second field survey was conducted for three consecutive growing seasons from 1999 through 2001 to

monitor responses of leafy spurge to chemical and biological control measures. This project entailed collection of data from a total of 550 3 by 5 m plots to geographically document presence/absence of leafy spurge, and to produce detailed estimates of canopy cover (via stem counts) and biomass for leafy spurge and associated native vegetation types. Plots containing leafy spurge were a combination of known bio-control measure locations and stratified random samples from areas previously mapped as leafy spurge (Anderson, et al., 1997). Plots not containing leafy spurge were randomly selected from a buffer zone extending 250 meters in all directions from previously mapped leafy spurge infestations (Anderson, et al., 1997). Ground data obtained from the first of these surveys were used for determining classification training inputs and setting of thresholds. Data from the second survey will be used to perform accuracy assessments on the classifications developed from both the Hyperion and AVIRIS imagery.

Leaf-level spectral measurements were also carried out for biochemical analysis of leaf chlorophyll concentrations through SPAD-502 chlorophyll meter readings (Minolta Camera Co., Ltd., Japan) and leaf reflectance and transmittance. Leaf and bract optical measurements were acquired from leafy spurge samples collected at different locations in order to use reflectance and transmittance for red edge characterization and modeling leafy spurge canopy reflectance as a function of different densities.

Single leaf reflectance and transmittance measurements were acquired on all leaves and bracts using a Li-Cor 1800-12 Integrating Sphere apparatus coupled by a GER-2600 spectrometer yielding a 0.5 nm sampling interval and 2.5 nm spectral resolution in the 340-2500 nm range. Measurements were collected with the integrated sphere following the methodology described in the manual of the Li-Cor 1800-12 system in which five signal measurements are required: transmittance signal, reflectance signal, reflectance internal standard, reflectance external reference, and dark measurements.

8. Preliminary classification analyses

Minimum noise fraction (MNF) principal components analyses were performed on the 1999 and 2001 AVIRIS and 2001 Hyperion surface reflectance data to reduce overall data dimensionality. Both years of AVIRIS data yielded approximately 30 useable components compared to 10 from Hyperion. The Spectral Angle Mapper (SAM) algorithm in the Environment for Visualizing Images (ENVI) was applied to selected components of each set of imagery that gave clear visual indications of known leafy spurge infestations. Two leafy spurge infestations that had been observed on the ground were selected for training areas. Both were approximately 100 m square, and represented dense-(50%) and moderate-(35%) canopy cover. Pixels representing these areas were located in the Hyperion imagery by visual interpretation and comparison of image spectra with mean ground spectra obtained from these sites. The SAM classification algorithm was then used to generate a rule image for the high- and moderate-density training areas. Gray-scale density values on the rule image represent spectral angle values, with smaller angles (i.e., darker areas) indicating closer matches to the reference spectrum. The two rule images were then added to each other, producing an integrated rule image (Figure 4). This image was then georeferenced and visually compared with the GPS field survey data and polygons from photointerpreted leafy spurge maps created with 1993 aerial photographs. Using these visual comparisons, digital values on the summed rule image were thresholded to produce a leafy spurge occurrence map (Figure 5). Determination of the threshold value was based on interactive contrast stretching of the rule image to match small spectral angle values with GPS ground surveyed areas (National Park Service, 2001) and previous photointerpreted mapping boundaries of leafy spurge (Anderson *et al.*, 1997). From a statistical point of view, an optimal threshold value would result in a classification where there is a balance between errors of commission and errors of omission. However, a classification with a looser threshold that minimizes or eliminates errors of omission would be more useful from a land management and monitoring perspective, because of the importance of not overlooking locations of existing and newly developing infestations. Further analysis with accuracy assessments using ground verification data is expected to assist in making a final and best determination of the threshold.

Spectral feature fitting, applied to a continuum-removed version of the chlorophyll absorption zone, has been successfully demonstrated for mapping leafy spurge using Compact Airborne Spectrographic Imager (CASI) data calibrated to surface reflectance (Kokaly *et al.*, 2001a, 2001b, 2001c). A library of ground spectra, collected from several leafy spurge infestations, was used for reference spectra. Similar analyses of the 1999 and 2001 AVIRIS surface reflectance data using these same library spectra are also expected to produce viable classifications of leafy spurge infestations.

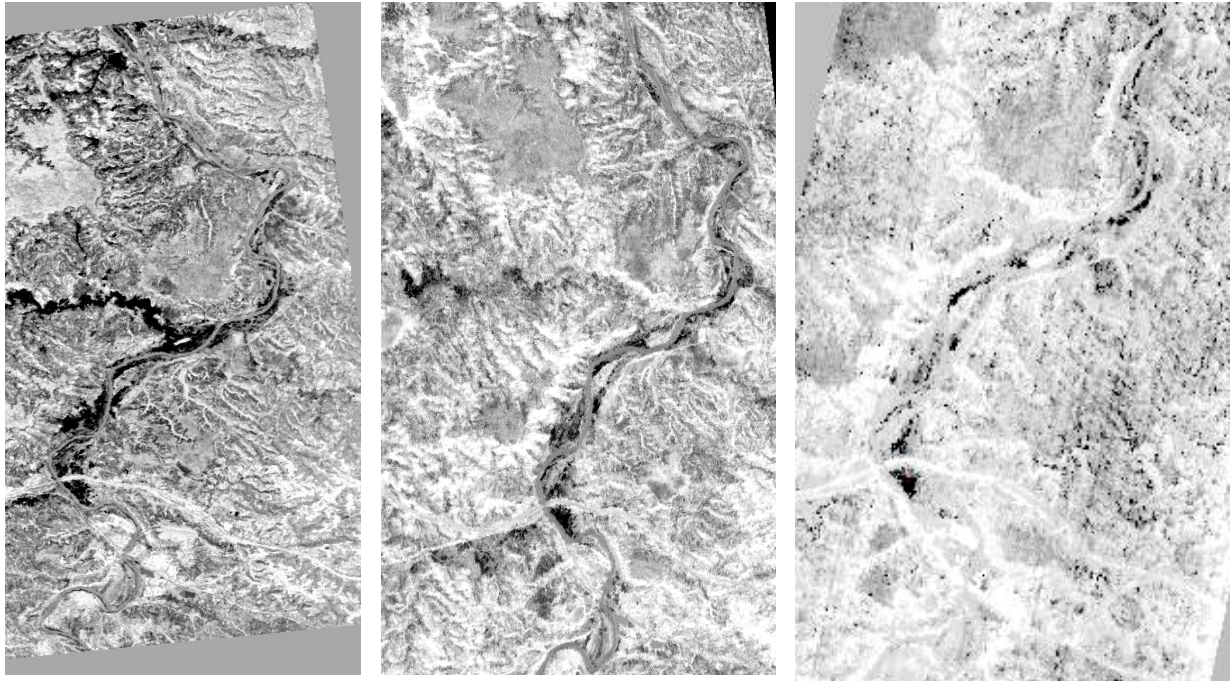
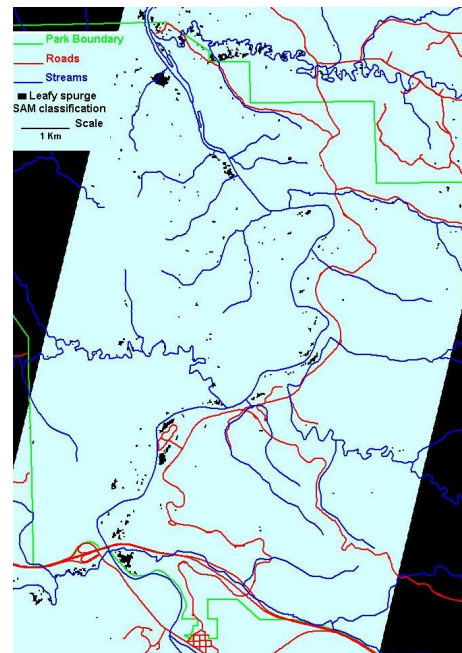


Figure 4. Summed spectral angle mapper rule images from 1999 AVIRIS (left), 2001 AVIRIS (middle), and 2001 Hyperion (right). Note the absence of leafy spurge in the lower Knutsen Creek drainage (center of image) in the 2001 images, resulting from chemical control measures taken in late 1999.

Figure 5. Example of a tightly thresholded spectral angle mapper classification of the 2001 Hyperion data, showing only the closest matches to the reference spectrum (i.e. very small spectral angles). Although other vegetation that might be mis-classified as leafy spurge is virtually eliminated, many less dense infestations and those mixed with other types of vegetation are more likely to be omitted from the classification.



A third approach being investigated is based on the calculation of red edge spectral parameters from hyperspectral data, which are related to biophysical and biochemical constituents of the vegetation canopy. A method for the classification of land cover has recently been reported that exploits systematic differences in species within the shorter wavelength infrared spectral regions sensitive to foliar chemistry (Martin *et al.*, 1998). Zarco-Tejada and Miller (1999) described classification of vegetated land cover based on spectral parameters that characterize the red edge reflectance region, which are responsive to foliar chlorophyll pigment levels. Classification with three red edge spectral parameters, red edge inflection point (λ_p), the wavelength at the

reflectance minimum (λ_0), and a shape parameter (σ) as defined by the inverted-gaussian red-edge curve-fit model (Hare *et al.*, 1984; Miller *et al.*, 1990, 1991), was carried out with the surface reflectance calibrated Hyperion data. The separation of land cover types and location of leafy spurge patches using this classification method is based on cover-type systematic differences in the variables known to affect red edge spectral parameters: vegetation chlorophyll content, canopy structure, canopy cover, and illumination. Preliminary classifications from the inverted-gaussian red-edge curve-fit model for red-edge spectral parameter calculation, adapted for Hyperion reflectance data, also compare favorably with the preliminary results from the first two methods described above.

9. Further research tasks ahead

During the next year finalized classifications developed by the methods described above will be completed and compared by applying accuracy assessments to each technique. In combination with precise georeferencing procedures, classifications for all four AVIRIS flight lines will be merged, producing leafy spurge maps for the entire South Unit of the park. These maps will then be used to quantify the effects of integrated pest control efforts undertaken by the park from 1999 through 2001.

10. Conclusions

AVIRIS has been a central element of four years of imaging spectroscopy research in detection and mapping of invasive leafy spurge at Theodore Roosevelt National Park in southwestern North Dakota. The exceptionally high signal-to-noise ratios, well-defined system calibrations, and recently improved geospatial positioning capabilities of AVIRIS have provided an excellent reference point for comparison with the Hyperion imager on the orbital side, and CASI on the low altitude aircraft side, for effectiveness of mapping leafy spurge with imaging spectrometers spanning a wide range of spatial resolution. Preliminary results of three different classification techniques indicate that leafy spurge is generally separable from its associated vegetation types. Further research is expected to quantify classification results and explore the potential for generating more regional, multi-flightline maps of leafy spurge infestations that will provide valuable contributions to monitoring and controlling efforts.

11. Acknowledgments

The authors acknowledge the substantial contributions of the National Park Service and Theodore Roosevelt National Park for field, logistical, laboratory, and GPS ground survey support, Diane Larson of the USGS Northern Prairie Science Center for providing field plots data, Joe Boardman of Analytical Imaging and Geophysics LLC for assistance in georeferencing and terrain correction, and John R. Miller and James Freemantle (York University and CRESTech, Canada) for sharing the computer code for red-edge parameter calculation.

12. References

- Analytical Imaging and Geophysics 2001, ACORN User's Guide. Version 3.12. Analytical Imaging and Geophysics LLC. 4450 Arapahoe Ave. Suite 100. Boulder, CO 80303 USA. acorn@aigllc.com.
- Anderson, G.L., J.H. Evert, D.E. Escobar, N.R. Spencer, and R.J. Andrascik. 1997, Mapping leafy spurge (*Euphorbia esula*) infestations using aerial photography and geographic information systems. *Geocarto International*, vol 11, no. 1, pp. 81-89.
- Council for Agricultural Science and Technology (CAST). 2000, Invasive Plant Species. Issue Paper Number 13. Council for Agricultural Science and Technology, Ames, Iowa.
- Hare, E. W., J. R. Miller, and G. R. Edwards. 1984. Studies of the vegetation red reflectance edge in geobotanical remote sensing, in *Proceedings of the 9th Canadian Symposium on Remote Sensing*, pp. 433-440, Can. Remote Sens. Soc., Can. Aeronaut. and Space Inst., Ottawa, 1984.
- Kokaly, R., R. Root, K. Brown, G. L. Anderson, and S. Hager. 2001a, Calibration of Compact Airborne Spectrographic Imager (CASI) Data to Surface Reflectance at Theodore Roosevelt National Park. Abstract: 221st Annual Meeting of the American Chemical Society. April 1-5, 2001. San Diego, CA.
- Kokaly, R., R. Root, K. Brown, S. Hager, and G. L. Anderson. 2001b, Discriminating leafy spurge spectral signature from native vegetation using field reflectance measurements from Theodore Roosevelt National Park, North Dakota. Abstract: 221st Annual Meeting of the American Chemical Society. April 1-5, 2001. San Diego, CA.

- Kokaly, R. F., R. Root, and K. Brown. 2001c, Mapping the Distribution of the Invasive Species Leafy Spurge (*Euphorbia esula*) in Theodore Roosevelt National Park Using Field Measurements of Vegetation Spectra and CASI Imaging Spectroscopy Data. Third International Conference on Geospatial Information in Agriculture and Forestry. Denver, Colorado. 5-7 November, 2001. Poster presentation.
- Martin, M. E., S. D. Newman, J. D. Aber, and R. G. Congalton. 1998, Determining forest species composition using high spectral resolution remote sensing data, *Remote Sensing of Environment*, 65, 249-254, 1998.
- Miller, J. R., E. W. Hare, and J. Wu. 1990, Quantitative characterization of the vegetation red edge reflectance I. An inverted-Gaussian reflectance model, *International Journal of Remote Sensing*, 11, 121-127, 1990.
- Miller, J. R., J. Wu, M. G. Boyer, M. J. Belanger, and E.W. Hare. 1991, Seasonal patterns in leaf reflectance red edge characteristics, *International Journal of Remote Sensing*, 12, 1509-1524, 1991.
- Morse, L.E., J.T. Kartesz, and L.S. Kutner, 1995, Native vascular plants. Pages 205-209 in LaRoe, E.T., Farris G.S., Puckett, C.E., Doran, P.D., Mac, M.J., eds. *Our Living Resources: a Report to the Nation on the Distribution, Abundance, and Health of U.S. Plants, Animals and Ecosystems*. Washington, DC: U.S. Department of the Interior, National Biological Service.
- National Park Service. 1992, Statement for Management – Theodore Roosevelt National Park. Theodore Roosevelt National Park, Medora, ND. 73 p.
- National Park Service. 2001, Ground truthing remotely sensed leafy spurge infestations at Theodore Roosevelt National Park: Methodology for mapping project using global positioning systems and geographic information systems. Internal Report. U.S. Department of the Interior, National Park Service. Theodore Roosevelt National Park. Medora, ND. 6 p.
- O'Neill, M., S.L. Ustin, S. Hager, and R. Root. 2000, Mapping the Distribution of Leafy Spurge at Theodore Roosevelt National Park using AVIRIS. Proceedings of the 9th Jet Propulsion Laboratory (JPL) Airborne Earth Science Workshop. NASA JPL Publication 00-18, pp. 339-347.
- Pimentel, D. L. Lach, R. Zuniga, and D.Morrison. 2000, Environmental and Economic Costs of Non-Indigenous Species in the United States. *BioScience* 50:53-65.
- Redente, E.F. 1993, "Restoration management plans for National Park Service prairie sites in Colorado, South Dakota, North Dakota, and Wyoming." Colorado State University, Fort Collins.
- Root, R., and D. Wickland. 2001, Hyperspectral Technology Transfer to the U.S. Dept. of Interior: Summary of Results of the NASA/DOI Hyperspectral Technology Transfer Project. Proceedings of the Tenth JPL Airborne Earth Science Workshop. NASA JPL Publication 02-1, pp. 331-342.
- Trammell, M.A. 1994, Exotic Plants of Theodore Roosevelt National Park: Extent, distribution, and ecological impact. Master Thesis. University of South Dakota, Vermillion. 175 p.
- Zarco-Tejada, P. J., and J.R. Miller, 1999, Land cover mapping at BOREAS using red edge spectral parameters from CASI imagery, *Journal of Geophysical Research*. 104:27921-27933.